

GLOBAL LEARNERS AND LEADERS EXCEEDING EXPECTATIONS

essendon.north.ps@edumail.vic.gov.au
<https://www.enps.vic.edu.au>



DIARY DATES

Term 2, 2019

Monday 6th May

Year Five NGV Art Excursion

Tuesday 7th May

Year One Playground Design Excursion

Wednesday 8th May

Year Six Immigration Museum Excursion

Thursday 9th May

Year Four (BN/JS) 100 Story Excursion

Friday 10th May

Year Four (LC/MA) 100 Story Excursion

Year Five/Six Interschool Winter Sports

Mother's Day Afternoon & BBQ 3:30-5pm

Tuesday 14th – Friday 17th May

Year Three & Year Five NAPLAN

Friday 17th May

Year Five/Six Interschool Winter Sports

Saturday 18th May

Community Helping Hands Day 9am-2pm

Election BBQ 9am-4pm

Wednesday 22nd May

Year Three Niddrie Library Excursion

Thursday 23rd May

JSC "A Day in May" Fundraiser

Friday 24th May

Year Five/Six Interschool Winter Sports

Monday 27th May

School photos

Year Five Buckley Park Science Incursion

Tuesday 28th May

District Cross Country

Years Three-Six Adam Wallace Incursion

Friday 31st May

Year Five/Six Interschool Winter Sports

Thursday 6th June

House Team Event

Friday 7th June

Year Five/Six Interschool Winter Sports

ENPS NEWS

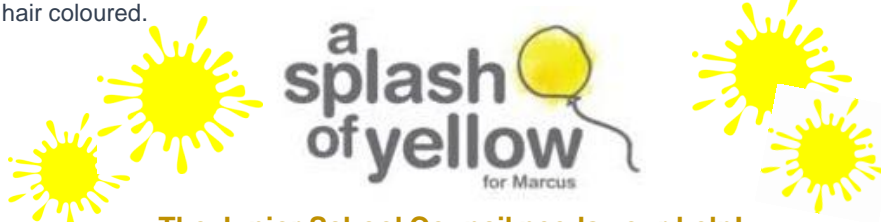
Term 2 | Issue #5 | Friday 3rd May 2019

JSC: A DAY IN MAY

Our Junior School Council have been busily working behind the scenes to plan and organise 'A Day in May'. On Thursday 23rd May, our school community will be taking action and raising some much-needed funds for the Marcus Rosin Fund, an organisation close to our hearts that supports children with cancer. One hundred percent of all monies raised will go directly towards the Children's Cancer Foundation (who work directly with the Royal Children's Hospital and Monash Children's Hospital on brain cancer research projects and clinical trials).

To support 'A Day in May' we ask that students and community members **wear a splash of yellow** and bring a gold coin donation to contribute.

To further support this event, students will have opportunities to enter colouring in competitions, purchase lolly bags, participate in drum playing and even have their hair coloured.



The Junior School Council needs your help!

To support us to take action, we are asking for:

- **Parent volunteers** that are available on either Wednesday 22nd or Thursday 23rd May to email: mckenzie.alice.j@edumail.vic.gov.au or galea.michelle.c@edumail.vic.gov.au
 - On Wednesday, the volunteers would be packing lolly bags and preparing for the event
 - On Thursday, we require support to distribute lolly bags, support the lolly guessing competition, apply coloured hairspray and count donations.
- **Lolly donations** – we are making lolly bags that will be available for sale throughout 'A Day in May' and would appreciate if your family could contribute a bag of lollies to support this initiative.
- **Cans of coloured hairspray** – We are requesting donations of coloured hairspray

We ask that all donations are sent to the front office by Friday 17th May and we thank you in advance!

We are thrilled to be organising this annual event and looking forward to making a difference in and beyond our community.



**Essendon
North**
Primary School
Brave Bold Connected

OUR MISSION: We maximise the potential of all; empowering independence, excellence, innovation and engagement with the world

112 Keilor Road
North Essendon 3041
Phone: (03) 9379 3979
Fax: (03) 9379 6371

Principal
Scott Mullen

Assistant Principals
Kate Barletta
Geoff Blaik

Business Manager
Cathy Carnovale

ACTING PRINCIPAL'S MESSAGE

It has been a really productive start to the term and I personally want to thank everyone for their support in my role as Acting Principal. While we have all been as busy as ever, the feel around school is really special. Thank you for all coming together so we can move forward with wonderful things ahead for our students, staff and families.

Communication

How we communicate is integral for us to keep this momentum going. We are committed to continuing to provide our community with timely and transparent communication and it is our hope this reassures families that we really are striving for the highest quality learning and working environments school-wide.



Anzac Day

It was a tremendous honour to share in the Anzac Day Dawn Service at the Keilor East RSL with twenty-five of our students and their parents. Together with Gordon Bell and Geoff Blaik, we stood together reflecting and remembering all those that have served to protect us. A wreath was laid by Rory (Year Five), Hamish and Olivia (Year 2) and Gordon on behalf of our school. We really hope we can continue this as a tradition into the future.

Open Day and Tour Leaders

One of the proudest days of our school year for me is our Open Day. It is a day when we get to share what we do, how we do it and most importantly why we do it. On Wednesday we showcased our community to potential families looking at enrolling at our school and families with younger siblings embarking on Foundation

the following year. This year we had seventy-three Year Five and Six students make a commitment to be leaders in action and host our attending families throughout the day on school tours. Our School Captains, Hamish and Joanna, presented our sessions with confidence and conviction. Our students really are our most valuable assets and they continue to exceed expectations! We are so incredibly proud of them all.

Open Day and Tour Leaders

One of the proudest days of our school year for me is our Open Day. It is a day when we get to share what we do, how we do it and most importantly why we do it. On Wednesday we showcased our community to potential families looking at enrolling at our school and families with younger siblings embarking on Foundation the following year. This year we had seventy-three year five and six students make a commitment to be leaders in action and host our attending families throughout the day on school tours. Our School Captains, Hamish and Joanna, presented our sessions with confidence and conviction. Our students really are our most valuable assets and they continue to exceed expectations! We are so incredibly proud of them all.



Professional Learning

In our commitment to being the best educators we can be, our staff are continually engaging in professional learning opportunities. Currently, members of our community are continuing to develop themselves further as learners: next week our staff will participate in Trauma Informed Practice professional learning, the Executive Team and members of our office team will undergo Asbestos Management Training, and our School Councillors will be undergoing governance training.

Annual General Meeting (AGM)

We invite our community to our upcoming AGM on Monday 20th May at 6pm. This is an opportunity to hear our reflections and performance throughout 2018 and our strategic directions moving forward.

Community Engagement and Fundraising

Having our students, families and staff feel connected to our school community is something we value and actively promote to you all. I encourage you all to complete our [Community Engagement Family Form](#) to provide us with the feedback we need to get you involved and engaged. We have lots of great community events coming up this month, so please lend a hand, come along and/or make a donation. We have set a goal of \$3,000 for this term to raise money for further replacement of reading and library resources that were impacted last term and for play space equipment and outdoor seating to improve our compromised outdoor learning spaces, while the oval works are undertaken.

Thanks again for your ongoing support and as always, we welcome your continued communication and engagement.

Kate Barletta
Acting Principal
barletta.kate.e@edumail.vic.gov.au



FRIDAY 10TH MAY
MOTHER'S DAY
EVENT

Fun activities for students to participate in with their mother/mother figures at school

Activities will include scavenger hunt, portrait drawing and Art4Kids drawing, Pop Art, jewellery making, Cosmic yoga, board games and puzzles and much more!

The Community Engagement committee parents, staff members and volunteers are hosting a fundraiser sausage sizzle for families to enjoy.

There will be a hamper raffle with HEAPS of wonderful prizes to win JUST FOR MUM!

Further information regarding the activities on offer and a personalised invitation will be sent home next week. Keep an eye out!



The students of Essendon North Primary School invite you to an afternoon of fun with your child / children as a way of recognising and appreciating 'mums' for Mother's Day

Friday 10th May
from 3:30pm – 5pm

Save the date - don't miss it!

ESSENDON NORTH PRIMARY SCHOOL
112 Keilor Road, Essendon
North VIC 3041

03 9379 3979

www.enps.vic.edu.au

essendon.north.ps@edumail.vic.gov.au

COMMUNITY HELPING HANDS DAY



DATE: SATURDAY 18TH MAY 2019
TIME: 9am to 2pm

We have a range of little jobs and big jobs that need to be done around the school. It is true that many hands make light work! Can you help? We have all sorts of jobs from cleaning, gardening, painting, to revamping the fairy garden, line marking, post digging to re-instate the basketball ring and much more! If you are coming to vote, why not come and lend a hand.

Children are welcome to come and help where appropriate or just enjoy some time in the playground.

2019 FEDERAL ELECTION

Essendon North Primary School will be a voting venue for the Federal Election on Saturday 18th May 2019. Planning is underway to hold a fundraising barbecue on the day from 9am to 4pm. Volunteers are welcome to contact the office to assist with planning and operation on the day.

SAVE THE DATE...

Save the upcoming events into your calendar...

Family Maths Afternoon: Wednesday 26th June 2019 from 3:30pm to 4:30pm

Bunnings BBQ Fundraiser: Sunday 14th July 2019 from 7am to 4pm at Bunnings Highpoint

ENPS Festival: Saturday 16th November 2019, see upcoming information for details, volunteering and participating

2020 Centenary celebrations: We are beginning to plan our centenary celebrations and we need help to pull our history as a school and a community together. If you are interested in being on the planning committee or have ideas to share we would also love to hear from you!

Don't forget that you can use the [googleform](#) to register how you want to get involved or contact the office and leave your details. A member of our Community Engagement Team will get back to you!



PSW UNIFORM SIZINGS

PSW is experiencing a changeover in fitting of their garments, from Original Fit to a NEW fit. The new fit is slightly leaner and now in line with modern fits around Australia! See the flyer on the next page with more information about the new garment fit.

If you are unsure of the sizing, PSW recommend to come in store and try them on.

FUNDING ASSISTANCE

APPLYING FOR CAMPS, SPORTS AND EXCURSIONS FUNDING (CSEF) ASSISTANCE
Do you hold either of the concession cards below?



Parents and carers holding either of these concession cards may apply for \$125 per child to use for payments relating to Camp, Sports and Excursion (CSEF).

Please read the flyer at the end of this newsletter for more information regarding eligibility and assistance, and visit ENPS office with your concession card and complete your form.

Financial assistance will be allocated to your family's account and paid towards ENPS camps, sports and excursions held 2019.

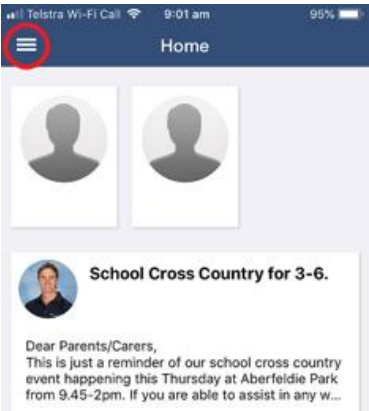
All CSEF balances roll over to the new school year. If you would like to check your family statement, please contact the office.

COMPASS PAY – PAYING FOR AN EVENT

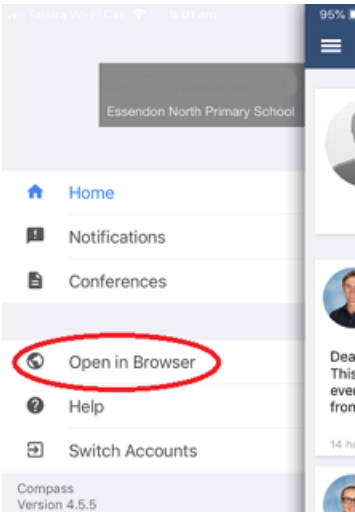
How do I pay for my child's events?

Please follow the steps below on how to make a payment for school events using your device.

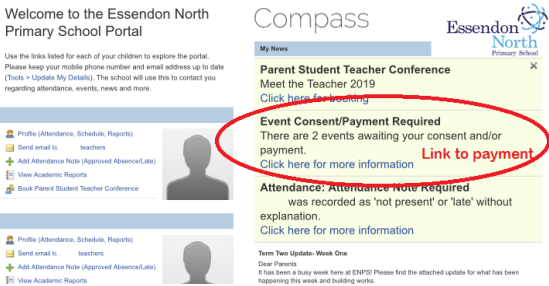
If you are using your PC/laptop, please start at Step 3.



STEP 1: Open your mobile browser. Select the three bars on the top left hand side of the screen.



STEP 2: Select 'open in browser'. This will take you to the web version of Compass.



STEP 3: The payment link will be on the right side highlighted in green.

Events

My Children's Events				
My Payments				
Event	Date/Time	Consent/ Payment Options	Due	
Year Five Art Excursion	Monday, May 6 2019 - 08:45 AM to Monday, May 6 2019 - 03:15 PM	Process Now (Online) Print Form (Offline)	05/05	
Year Five Art Excursion	Monday, May 6 2019 - 08:45 AM to Monday, May 6 2019 - 03:15 PM	Process Now (Online) Print Form (Offline)	05/05	

STEP 4: Click on the link and go to the payments page. Any outstanding payments will have a red button noting "Process Now".

STEP 5: On the payments page please check:
Your contact details on the day of the event;
Any medical information you need to provide for your child.
The consent for the event will consist of you typing your name to confirm at the bottom.
The payment information follows.
When you have finished, press **Submit**.

[If you have credit on your account or CSEF, please contact the office (9379 3979) for it to be applied. Then you only need to complete the online consent form.]

Year Five Art Excursion : Consent and Payment

[Back to Events]

Consent and Payment has not been received. Parent or guardian action is required.

Event Details
Description/Educative Purpose: Our current central idea is 'Throughout history artists have challenged ideas and reflected society'. On this excursion we will visit the National Gallery of Victoria (NGV) in the morning and participate in a street art tour around the CBD in the afternoon. At the NGV students will be involved in a 'Welcome to the gallery' tour, as

Events

My Children's Events				
My Payments				
Event	Date/Time	Consent/ Payment Options	Due	
Year Five Art Excursion	Monday, May 6 2019 - 08:45 AM to Monday, May 6 2019 - 03:15 PM	Complete (See Details) Print Form (Offline)	05/05	
Year Five Art Excursion	Monday, May 6 2019 - 08:45 AM to Monday, May 6 2019 - 03:15 PM	Complete (See Details) Print Form (Offline)	05/05	

STEP 6: Your payment is complete!

If you have any questions, please contact the school office on 9379 3979.



2019 SPORTS EVENTS

Dear families and carers,

To assist you with planning, please see below ENPS dates for PE and Outdoor Education activities in 2019 together with proposed costs.

Term 2

Year 5/6 Interschool Sport (Fridays during Term Two) - commences Friday 26th April (approx \$40)

Term 3

Years 4-6 School Athletics Carnival – Thursday 25th July (approx \$10)

Year 5 Feathertop Camp – Tuesday 6th – Friday 9th August – (approx \$390)

Year 6 Hoottime basketball tournament - Friday 9th August (approx \$20)

Year 3 Anglesea Camp – Monday 2nd – Wednesday 4th September (approx \$305)

Year 4 Anglesea Camp – Wednesday 4th – Friday 6th September (approx \$305)

Term 4

Year 2 Camp – Tuesday 29th/ Wed 30th October (approx \$196)

Jump Rope For Heart – Thursday 21st November (gold coin donation)

F-3 Athletics Carnival – Thursday 12th December (no cost)

Craig Mather

Physical Education Coordinator

LIBRARY NEWS



The 2019 Premiers' Reading Challenge is now underway and this year we have over 270 students participating. The Challenge aims to encourage a love of reading for pleasure in students, and to enable them to experience quality literature. It is not a competition but a challenge to read more and to read more widely. Students are to read a set number of books over the year and record their efforts online with each successful student receiving a certificate from the Premier of Victoria.

Students have received their username and login details this week. If you experience any problems logging in, please don't hesitate to contact me; schenk.julie.a@edumail.vic.gov.au

The Children's Book Council of Australia have just announced the **2019 Children's Book of the Year** shortlist. Each year 36 books are chosen in 6 categories for their outstanding contribution to Australian children's literature. The library will have a copy of every nominated book and we will read a different title each week during each grades library time. The winners are announced during *National Book Week* in August.



EARN & LEARN!

Woolworths Earn & learn for Schools is back!

Essendon North Primary School has been entered into the 2019 Earn & Learn Program.

How can we all help you may ask?

EASY.... When you shop at Woolworths, you'll receive Woolworths Earn & Learn stickers for our school that we can exchange for sports gear. The more stickers we collect, the more sports gear we'll receive. It's that simple.

Start collecting today because the race is on! You can bring any sticker sheet collected into school and put them in the box located in the foyer outside rooms 1, 2 and 26.

Thank you for your support!

ISSUE #5 PAGE 6

The more you earn, the more they learn

It's easy to Earn & Learn. Just get everyone you can earning as many stickers as possible. You can then redeem these stickers for your choice of over 10,000 different pieces of brand new equipment.

We've helped thousands of schools get new equipment

Back in 2017, over 15,000 schools and Early Learning Centres earned over 300,000 pieces of brand new school equipment for kids all over Australia.

This year, we're proud to once again be partnering with Australia's biggest supplier of resources for schools, Modern Teaching Aids. This means you'll once again have access to a huge range of new equipment. You can choose whatever it is that you need, across every possible category including ICT, science, sports, mathematics, arts and crafts and more.

Anyone can help you Earn & Learn

Earn & Learn only runs for a limited time, so spread the word and get everyone helping you collect stickers: kids, parents, grandparents, staff, neighbours and friends.

It's easy for everyone to stick together

collect Between 1 May and 26 June 2019, collect as many stickers as you can.

keep Stick them on the supplied posters or sticker sheets. Don't forget, you can always download and print extra sticker sheets on teaching.com.au

count This time, you won't need to send your stickers back to us. You'll just need to count them up and let us know how many you've got. But it's important that you hand onto your stickers until your new equipment arrives.

easy!

STUDENT OF THE WEEK

FAW	-; CHLARA
FCW	JACOB; DHYANA
FMV	ESTELLE; AN
FSM	RYAN; MISHIKA
1CT	ALEXANDRO; KRIYA
1ES	RYE; JAZZY
1JS	- ; LEAH
1MT	AKIRA; ANTON
2AJ	LAUREN; -
2CM	JENNY; FELIX
2CW	SASHA; YASHVIN
2SG	TATE; CHARLOTTE
3AP	- ; ZOE
3AS	TIN; ZENA
3EG	TIRDHA; OLIVIA C
3KG	AAYAN; -
3MP	- ; MAX
4BN	- ; MASSIMO
4JS	MAKSIM; -
4LC	NALHA; JULIAN
4MA	ALEXANDER; -
5ET	BRYAN; LOLA
5LE	SAMANTHA; ANNABELLE
5MG	COOPER; -
5ST	SOPHIA; JACK L
6CS	- ; WINTER SPORTS
6CU	ENNAN; WINTER SPORTS
6EG	QUANG; WINTER SPORTS
6JK	- ; WINTER SPORTS

SCHOOL PHOTOS

Payment envelopes have been sent home to families – please return these to school prior to photos day.

Photo day is Monday 27th May 2019

MSP Photography will take photos of all students. Any late payments will be picked up via the corresponding reference key.

LOST PROPERTY

Thank you to all families who have ensured their children's uniforms have been clearly labelled. So far, all lost property has been returned to owners quickly.

ENPS does encourage students to be responsible and care for their uniform, bags and lunch containers, and to locate missing items in the lost property before a staff member needs to do this job.

Please ensure you collect YOUR OWN UNIFORM. Many families have advised that clearly labelled items have been taken or gone missing.

WALK SAFELY TO SCHOOL DAY

Walk Safely to School Day asks that we all consider transport habits and try to incorporate more walking part of a healthy, active way to get around. And altho walking all the way to school isn't realistic for many of it's quite easy to figure out how you can build a walk your family's daily routine.



You can teach your child the healthy habit of walking more by:

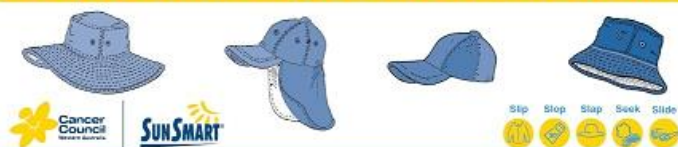
- Walking with them the whole way to school
- If they get the bus or train, walk past your usual stop and get on at the next stop
- If you have to drive, park the car a few blocks away from the school and walk the rest of the way.

Regular exercise like walking with your child not only helps them (and you!) beat chronic problems like obesity, heart disease, behavioural and mental health issues and diabetes. It also gives you a great opportunity to teach your child safe ways to behave around roads and traffic.

Remember, Active Kids are Healthy Kids so get planning your own Walk Safely to School Day journey for **Friday 17th May 2019!**

SUNSMART – REMEMBER YOUR HAT

One of these things is not like the others



Caps don't keep the sun off!



SunSmart hats protect the neck, ears, temples and sides of the face. Broad brimmed, bucket and legionnaire hats all offer very good protection to these vulnerable areas. Baseball caps and sun visors do not provide adequate protection to these areas which are common sites for skin cancer.

The ENPS's sun smart policy is enforced from September to April.

Even during winter, the sun UV rays are still strong. Make sure your child:

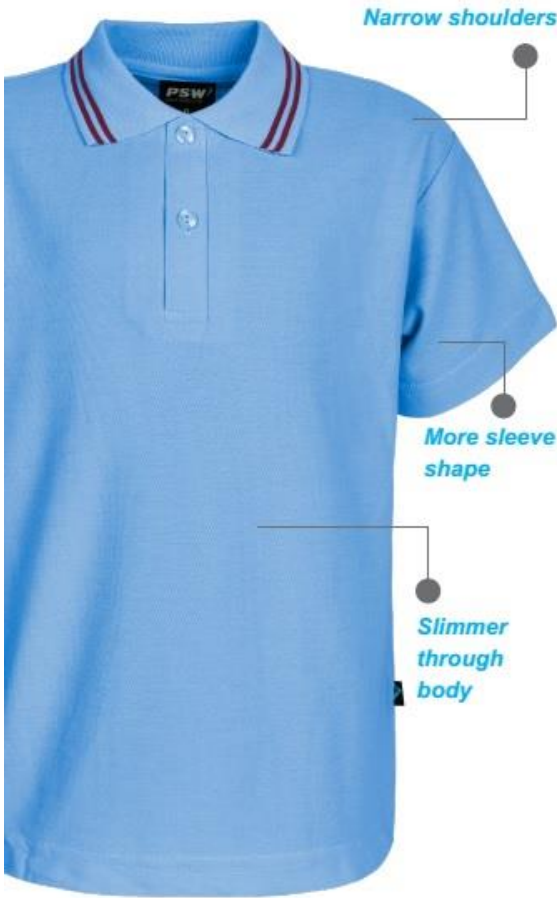
- to applies sunscreen at the start of each day; and
- **WEAR A HAT.**

Check the UV index the Sun Smart app for daily information.

PSW UNIFORM SIZINGS

WE'RE CONFIDENT YOU'LL PREFER IT

➤ PSW NEW FIT



Narrow shoulders

More sleeve shape

Slimmer through body

Following a full and detailed analysis of the current market trends, combined with the feedback we get from our customers, we are pleased to introduce the new fit and style of our range.

Some of the new improved versions have already made their way into our warehouse, and into your schools.

This summer, we have begun rolling out the New Fit polos and shorts that have been tailored for a more complimentary fit to all students.



➤ Key features of the new fit Polo

➤ ONE SIZE DIFFERENCE [eg REGULAR SIZE 6 IS NOW A SIZE 8]

- Wear comfortably under PSW jackets of same size
- More in line with anything you would buy from other retailers
- Same endurance and premium quality
- Tailored fit
- Softer look

➤ WHAT DOES THIS MEAN TO YOU?

The improved fit is now available in the majority of the PSW range including wool jumpers, rugby jumpers, blazers, bonded jackets, expandable waist shorts and trousers and all new styles introduced in recent years.

It is also transitioning through:

- Mesh Polo Shirts
- Pique Polo Shirts
- Tracksuit Pants
- Bomber Jackets
- Windcheaters
- Hoodies

In 2019 you will see the following items added to the new fit range:

- Winter Tunics
- Dresses
- Winter Skirts
- Formal Shirts

PSW thank you for your loyalty to our brand, and assure you that the transition to our new fit will not in any way affect the service and commitment that we have demonstrated thus far.

Please contact your PSW Account Manager for further information or if you require assistance with placing your orders.

Contact PSW Head Office & Distribution Centre

Factory 1, 46-54 Letcon Drive, Bangholme, Vic, 3175 | psw.com.au | Ph: (03) 9768 0308 | Fax: (03) 9701 7259

Master Class Presentation

1. Premium Pack

New!

\$52



2 x 10" x 8"



1 x 5" x 7"
Black and White
Portrait



1 x 5" x 7"



4 x 5" x 3.5"



4 x 1.7" x 1.2"



Portrait Download
Print quality

Best Value
for money

2. Classic Pack

\$44



1 x 10" x 8"



1 x 5" x 7"



2 x 5" x 3.5"



3 x 3.5" x 2.5"



4 x 1.7" x 1.2"



Portrait Download
Print quality

3. Value Pack

popular choice

\$39



3 x 5" x 7"



2 x 5" x 3.5"



3 x 3.5" x 2.5"



4 x 1.7" x 1.2"



Portrait Download
(Not print quality)

4. Essential Pack

\$36



4 x 5" x 7"



4 x 5" x 7"



4 x 5" x 7"



4 x 5" x 7"



4 x 1.7" x 1.2"



Portrait Download
(Not print quality)

5. Basic Pack

\$35



1 x 5" x 7"



2 x 5" x 3.5"



3 x 3.5" x 2.5"



4 x 1.7" x 1.2"



Portrait Download
(Not print quality)

6. Group Only

\$29



Gift Pack Items



3 x Photo
Bookmarks
8" x 3"



3 x 2" x 1.4"



1 x Door Hanger
10" x 4"



1 x Photo Calendar
5" x 7"



4 x Photo Gift Tags
3.4" x 2.5"

Parents, please remember...

- On photo day, please send your child to school with:
1. A completed envelope (even if not placing an order or ordering online)
 2. Best school clothes (clean is always best!)
 3. Their best smile!

More products and options
available - Order Online!

Visit www.msp.com.au

msp
photography
Capturing School Moments



FREE
WORKSHOPS

DOES YOUR CHILD HAVE AUTISM?

Progression to school

A workshop for parents

Date: Thursday 16th May 2019

Venue: Hume Global Learning
Centre,

1093 Pascoe Vale Rd,
BROADMEADOWS

Time: 1.30 - 4.30pm

REGISTER TODAY!

Amaze:

www.amaze.org.au/earlydays



It is highly recommended you attend the "My Child and Autism" workshop prior to attending this workshop

How Early Days can help:

Early Days provides workshops for parents and other family members of children 0-6 who have an Autism Spectrum Disorder (ASD) diagnosis or are going through the assessment and diagnosis process.

What this workshop offers:

- Understand the importance of working as a transition team
- Tips and ideas to help you ready your child for school

More about Early Days workshops

- Free to attend
- Held in small groups of 4-15 and gives you an opportunity to meet other parents
- Lunch & light refreshments provided
- Childcare is NOT provided



earlydays

www.earlydays.com.au

promoting development of
young children on the autism spectrum

Parking near a school

- Play it safe.
- Adhere to the 40km per hour zone when travelling in an operated school zone.
- Do not park on or near a school crossing.
- Do not double park.
- Always let your child out on the kerb side of the road.
- When using the pink drop off zones, you cannot wait more than two minutes or you will be issued with an infringement. Plan to arrive after the bell rings at pick up time.

Tips for parents

- Map out the safest route possible.
- Prior to the first day of school walk or cycle the route with your child several times so they are familiar with it.
- Talk to your child about what they should do if you are not there on time.
- Identify any 'safe houses' along the way ie. homes belonging to neighbours, relatives or friends.
- Teach your child to always cross at pedestrian crossings or intersections, to stop one step back from the kerb and to be fully alert when crossing the road.
- Teach your child to look out for cars entering and exiting driveways.

Tips for kids

- Put away anything that might distract you such as mobile phones, music or gaming devices.
- Always use the school crossing, and wait for the Crossing Supervisor to blow their whistle before crossing the road.
- If riding your bike or scooter, check that your helmet fits firmly and your brakes work.
- Only children under 12 years of age and the adult with them are allowed to ride on the footpath.
- You must have a bell or horn on your bike to warn others that you are coming.

For more safety tips and information go to mvcc.vic.gov.au/gettingtoschool or contact our Transport Project Officer on 9243 8888.



Getting to and from school



Better Moves to Schools maps

The Better Moves to Schools map is an interactive map designed to help you and your child/ren map out a route to school, find walking/cycling paths that already exist or identify an easy place to park and walk to primary school.

Select your school and view the Active Path and Walking School Bus routes, Park and Walk locations and pedestrian crossings and plot your route.

Active Paths

Is your school an Active Paths school? The Active Paths initiative is about making it easier for students that want to ride, walk, scoot or skate to school.

Council works with the school and bicycle network through our Better Moves Around Schools Program to identify paths to school which are most direct, fun and based on where students live. Footpath decals will guide students along the way. If your school has Active Paths, grab some friends and make it fun walking to and from school.

To find out more about Better Moves to Schools maps and Active Paths go to mvcc.vic.gov.au/gettingtoschool

Walking School Bus

The Walking School Bus is a fun, healthy and safe way for primary school-aged children to travel to and from school.

Children walk to school accompanied by two adult leaders (a 'driver' and 'conductor') picking up children at 'bus stops' on the way to school.

It aims to increase physical activity amongst children and reduce traffic congestion around schools.

The Walking School Bus is a free program run in collaboration with Council, VicHealth, schools, parent volunteers, traders and community groups.

Walking School Bus routes are marked on the Better Moves to Schools maps.

To join a Walking School Bus or to start your own Bus go to mvcc.vic.gov.au/gettingtoschool

Walk to School Challenge

Each year we support VicHealth's Walk to School initiative by challenging all school aged children to walk, cycle or scoot to and from school in October.

It's a fun, free and easy way to get active, win awesome prizes and get to know your neighbourhood.

Your school can give you information or check mvcc.vic.gov.au/gettingtoschool for updates

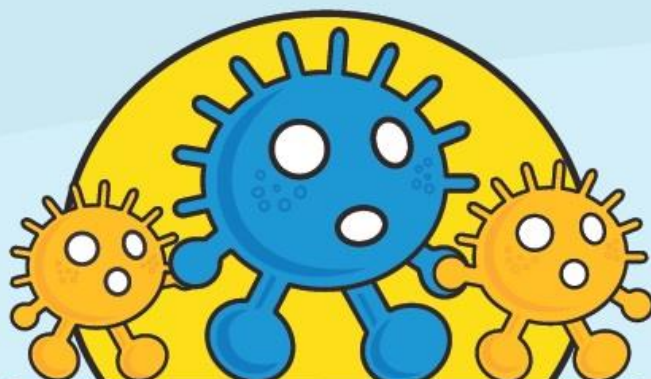
Park and Walk

If it's too far to walk to school from home, why not walk some of the way? We've identified a number of Park and Walk locations around primary schools in Moonee Valley to help you experience the fun of walking to school, even if it's a long way from home.

Park and Walk locations are marked on the Better Moves to Schools maps.



ACTIVE KIDS ARE SMARTER KIDS



**WALK SAFELY
TO SCHOOL DAY**

FRIDAY 17 MAY 2019



**Until they're ten, children must always hold
an adult's hand when crossing the road**

WALK.COM.AU



@nationalwalksafelytoschoolday



@natwalktoschool



@natwalktoschool

#WSTSD

SUPPORTED BY THE AUSTRALIAN GOVERNMENT AND ALL STATE, TERRITORY AND LOCAL GOVERNMENTS

FINANCIAL ASSISTANCE INFORMATION FOR PARENTS

Every Victorian child should have access to the world of learning opportunities that exist beyond the classroom. The Camps, Sports and Excursions Fund helps ensure that no student will miss out on the opportunity to join their classmates for important, educational and fun activities. It is part of making Victoria the Education State and the Government's commitment to breaking the link between a student's background and their outcomes.

CAMPS, SPORTS & EXCURSIONS FUND (CSEF)

School camps provide children with inspiring experiences in the great outdoors, excursions encourage a deeper understanding of how the world works and sports teach teamwork, discipline and leadership. All are part of a healthy curriculum.

CSEF is provided by the Victorian Government to assist eligible families to cover the costs of school trips, camps and sporting activities.

If you hold a valid means-tested concession card or are a temporary foster parent, you may be eligible for CSEF. A special consideration category also exists for asylum seeker and refugee families. The allowance is paid to the school to use towards expenses relating to camps, excursions or sporting activities for the benefit of your child.

The annual CSEF amount per student is:

- \$125 for primary school students
- \$225 for secondary school students

MORE INFORMATION

For more information about the CSEF visit
www.education.vic.gov.au/csef

HOW TO APPLY

New applicants should contact the school office to obtain a CSEF application form or download from www.education.vic.gov.au/csef

If you applied for the CSEF at your child's school in 2018, you do not need to complete an application form in 2019 unless there has been a change in your family circumstances.

You only need to complete an application form if any of the following changes have occurred:

- **new student enrolments;** your child has started or changed schools in 2019 or you did not apply in 2018.
- **changed family circumstances;** such as a change of custody, change of name, concession card number, or new siblings commencing at the school in 2019.

Check with the school office if you are unsure.

